

Lighting your Wood Stove for the 1st time

Congratulations... your new wood stove will become the one purchase your kids will talk about for years to come

Like any new product - there are some things experience teaches you – and other things you really need to know

Before you light your stove

Being a new stove - it has instructions / tools / manuals inside the cooker - make sure you take a moment to remove all these

Check in ALL the ovens to make sure you remove the little bag used for absorbing moisture

The hot plates, hot plate hinges & ovens may have plastic protection on these - make sure you take a moment to ensure you haven't missed removing any of these

Couple of very basic rules

1. Your stove (if its set up with hot water or with radiators) **MUST** be connected to the water before you light your stove!!!
2. If your stove is designed for radiators - and you are not hooking them up: your stove will not operate correctly...if your stove is designed and sold with radiators (Hydronic Heating) its important to make sure its all hooked up and commissioned before lighting your stove - this includes the Thermostats for the pumps
3. The flue – most wood stoves work much much better with 15' or 4.5mtrs of working flue

The Initial lighting

OK – now lets light your stove

1. The flue damper – this needs to be in the open position
2. The air controls to your stove – also in the open position
 - It's ok to leave the firebox door open for the 1st 15min of your stove lighting
 - Plenty of kindling...we mean PLENTLY
 - Light with either firelighters or news paper
 - Add smaller pieces of dry wood – about 2 to 3 inches diameter once the kindling is alight
 - Then build your fire

Once you have established a nice fire (this will be at least 20min after the wood has ignited) - NOW put the Flue box damper (or oven damper) to the closed position

This will be at least 60 min after you initially light your stove.

Adjust the air control to slow down (control) your fire.

What you are trying to do is slowly build up the heat in your stove – take your time...

What you want in this initial lighting / **heating of your stove to take 4 – 6 hours...**

You are "burning in" the stove – any moisture and oils you are burning off the stove...And any paint you are curing....

Never run the stove with the fire door open, this is dangerous and the door could become distorted and no longer fit the frame of the firebox.

Couple of pointers...

- Don't leave empty cookware on the top of the stove when it is lit.
- Be Careful when manoeuvring around the cooker surfaces, enamel finish is glass and it will "chip" and scratch easily.
- Glues Resins and Binders are used in the materials in your stove, these can release a pungent smell during the initial "burning in" period. Don't worry these smells will disappear after approximately 4-6 hours or when the appliance has reached full working temperature.

Your Hot Plate

All hot plates are heavily covered in oils

These will not only smoke a lot in the first lighting - but will also change colour - even go blue tinge

Seasoning your hot plates

You will want to season your hot plates, this will make cleaning much easier

- To do this, use olive oil (not a man made oil - use a natural cooking oil) and, like your BBQ, dose up an old rag and rub on your hot plate while the hot plates are warm
- Do Not Do on a red hot plate, wait till its still warm, but not cold

Yes, you will get a face full of smoke when you are doing this, but by seasoning your hot plate regularly it will help for cleaning

Rusting on Hot Plates

It is common on some models to have slight "rusting" stain to the hot plates upon opening up your new stove, or if it hasn't been used for many months: although rare - this does happen

The best way to address this is:

- Use steel wool, or light sand paper, lightly clean up any marks (on the hot plates ONLY)
- While the stove is warm, season your hot plate with Olive Oil
- When you light up your stove, this oil will burn in and season your hot plate
- Repeat until the hot plate is completely seasoned

Knowing your stove

All wood stoves make noises as the water guggles away, and the metals expand and contract...

Its known as your stove "talking to you"

Noises and smells from a wood stove is normal - the trick is to get to know them

Grandma never used a cook book or the thermostat - she opened the oven door - put her hand in ; and just knew it was the right temp for her cake.

You will get to you your stove - you will know when you do once you name "her"

BUT if you are getting massive BANGING from your stove - this is NOT normal and you need to contact your installer asap - this noise is normally caused by water hammer, or an issue with the way your pipes are installed

What dont you want to do...

You do not want a roaring fire - but a slow start up

Take your time - you can load up the firebox - but you do not want the fire to be roaring

What will happen?

On the first lighting – **your stove will smoke... a lot**

This Smoke is all the oils on the metal and cast burning off

- it will set off your smoke alarms
- it will give a thick smoke to your home
- it may give you a headache

This initial lighting – is very important NOT to get a massive roaring fire until your stove has been burnt in...

This initial burning in will take 4 to 6 hours at least.

Opening a window is actually not a good idea inthe room of your stove..it may make the smoke worse..

But try a window up the other end of the house...

FAQ

Q – I have water coming out of my stove – underneath the oven...?

A – this is normal – it's the moisture around the oven dripping out - even flowing out when you light your stove for the 1st time : its all the trapped moisture during the storage and shipping of your stove : it may look black in colour

This may also re-occur if you live in a humid climate and haven't used your stove for a long period of time

This Leakage can occur up to 4 hours... but will stop

Q - How do i know if its my hot water jacket causing this ?

A - if it is a faulty hot water connection, or even a faulty hot water jacket, it will continue for days and the amount of water leakage can be substantial - call your installer if it continues

Q - When do i know my stove is cured?

A - It takes 4 -6 hours...but when your stove has no more "New Smell" is a good way of knowing

Q - I did what you said - but the next time I light my stove - the smell come back?

A - This is common if the stove was not hot enough on the first lighting... some stoves also take up to 3 initial heating up cycles for a true curing...

Q - What if I light my stove with the hot water not connected?

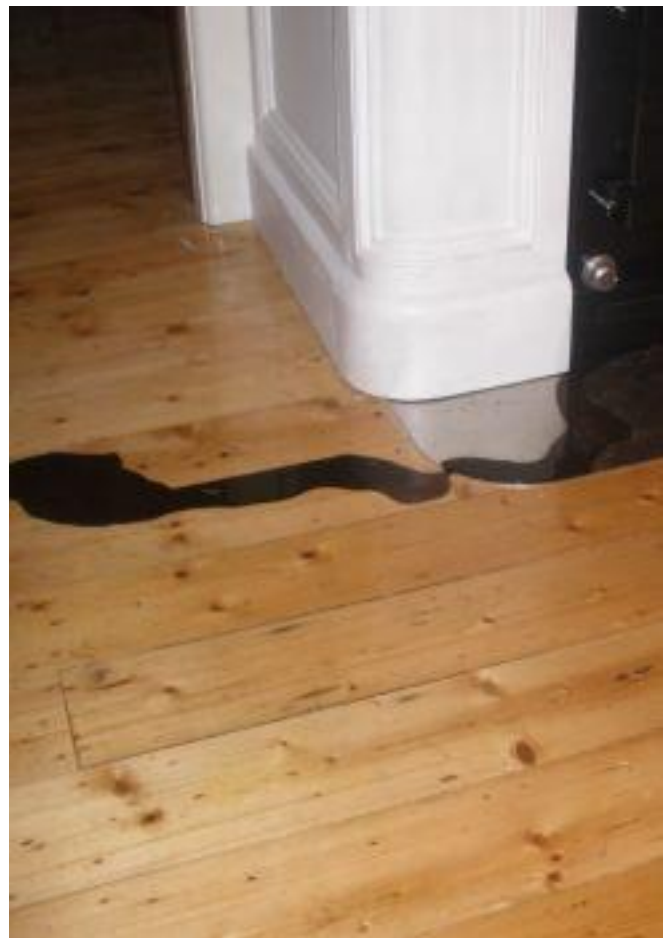
A - You will void the warranty

Q - I lit my stove and now I have massive boiling and hammering noise. Whats going on?

A - Check your hot water set up, if there is not enough flow in the pipes then the water temperature will build up in your stove and it will boil. You will need to get your plumber back ASAP

Q - Can I use Pine Cones to light my stove?

A - I wouldn't...use nice dry kindling - and heaps of it..



Q - Can I burn Brickets or Coal?

A - If your stove has a grate and ash tray, yes you can mix this with your wood - if you stove has an ash box, no

What Wood to Use

This is the most important thing to know

Wood stoves are NOT like wood heaters - you need to feed them correctly

Make sure your wood is right -

- The moisture MUST be between 15 - 18%
- Do not burn green and wet wood
- Use local hard woods
- It is NOT designed to burn rubbish
- and NEVER burn any glossy paper...

Hints...

Couple of basic hints

- Flame does not give you heat - its a firebox full of glowing embers and dancing flames do
 - get your flue hot
1. the hotter the flue
 2. the hotter the fire
 3. the hotter the oven

This only works in this order

- Make sure your wood is dry - use ONLY wood with a moisture level between 15 - 18%

There are moisture meters available to help you know how much moisture is in your wood.

Cold Start up...

Trick - pre heat your flue...

What you are doing is pushing all the cold air out of the flue and creating a draught...this will make any stove light up much faster...

There are 2 "old wives tales" ways of doing this...

Trick 1... Hair Dryer...

Use a (old) hair dryer - plug into the power and turn onto the low heat setting

Remove the flue box cover and position the damper in the forward position - insert the heat end of the hair dryer into the flue box - and leave for at least 5 min

(you can use the hair dryer on a high heat setting - but you may find it can blow dust into the room)

You should be able to put your hand on the flue and feel good heat

- have your fire ready to light

Once the flue is nice and warm - remove the hair dryer - re position the flue box cover and re position the Flue damper to the open position (so its pushed back)

And light your fire...

Trick No 2.... The Flaming Paper

Using 1 x sheet of news paper : remove the flue box cover, have the damper in the forward position and lightly shove the paper into the 1st length of flue

Its important not to heavily "jam" the paper in.

- have your fire ready to light: light the paper in the flue...

What you will experience is this

- The paper will light
- Then it will "roar" and shoot up the flue

It is exactly what to expect

As soon as the paper has "shot up the flue" - put the flue cover back on

Re position the Flue damper to the open position (so its pushed back)

And light your fire

Note : you will want to light your fire as soon as possible : while the heat in the flue is still there